

INSTRUCTIONS

I. Checklist, your B4Bra™ kit should contain:

1. B4Bra (Fig. A)
2. Syringe (Fig. B)
3. Fill valve (Fig. C)
4. Multiple pairs of sizers with leak-stop plug (Fig. D)

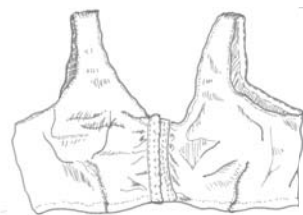


Fig. A

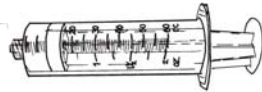


Fig. B

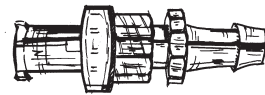


Fig. C
(Close-up)

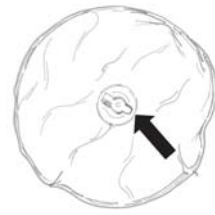


Fig. D
(Single sizer)

Sizers are individually marked with their size.

II. You will also need:

1. Flat surface area at which to work.
2. Water source or sink.
3. Container (bowl or pot) to hold water.
4. Towel to mop up spills and keep your work area dry.
5. One of the following: color safe bleach, hydrogen peroxide, alcohol or germicidal mouthwash (optional).
Use appropriate precautions with these materials.

III. Now begin:

1. Fill bowl with warm water. If you are considering leaving the water in the sizers for a prolonged time, fill the implants with a mixture of diluted germicidal agent (see II.5 above) in a ratio of 1teaspoon per gallon of warm water.

Caution: germicidal products may discolor clothes.

2. Attach syringe to fill valve using a push and clockwise twisting (screw-like) motion. (Fig E).

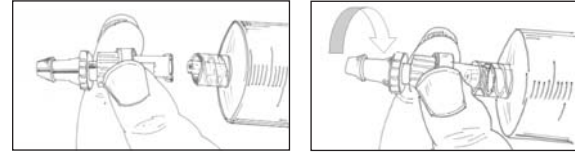


Fig. E

3. Open leak-stop plug of desired sizer (Fig. F). Sizers are labeled.

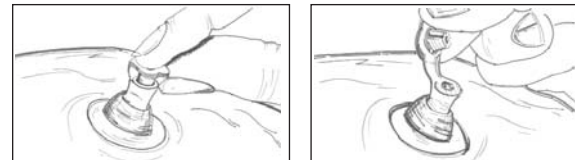


Fig. F

4. Insert syringe/fill valve into leak-stop plug by pushing firmly to secure (Fig. G).



Fig. G

5. To remove air or water from sizer, hold syringe extending directly vertically from sizer. **SIMULTANEOUSLY** pinch the base of leak-stop valve **AND** withdraw plunger of syringe (Fig. H).

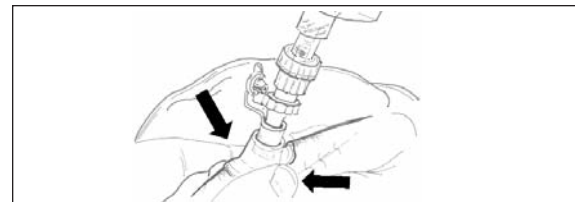


Fig. H

6. Readjust pinch maneuver and repeat if unable to withdraw. Be sure to hold syringe in a vertical direction (Fig I).

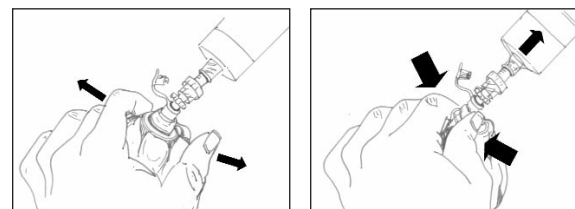


Fig. I

7. Leave fill valve attached to sizer by untwisting (counter-clockwise) and removing syringe (Fig J).

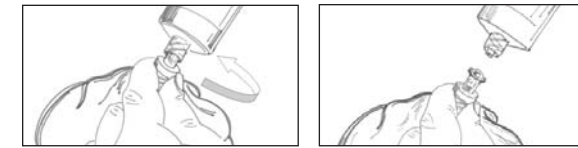


Fig. J

8. Submerge tip of syringe into the bowl of water and pull back on plunger to draw up water. See marks on barrel of syringe (Fig K).

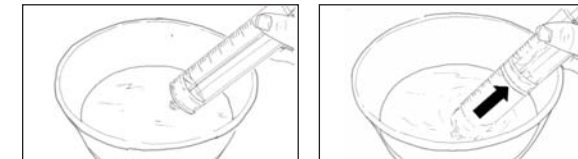


Fig. K

9. Eliminate excess air by turning tip of syringe upright and advancing plunger until air is purged (Fig L).

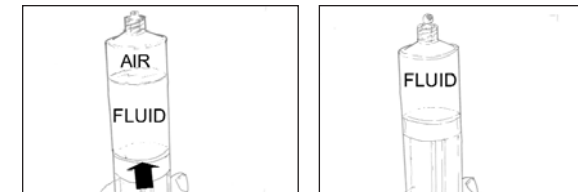


Fig. L

10. Re-attach syringe to fill valve sizer assembly and advance plunger to fill with water (Fig. M).



Fig. M

11. Record amount of water.

12. Repeat steps # 7-10 until desired fill is achieved. Excess water/air may be removed using steps # 5-6.

13. When the desired fill is achieved, you should **SIMULTANEOUSLY SQUEEZE** sizer with one hand **AND REMOVE** syringe-valve assembly using a twisting and pulling motion with the opposite hand (Fig N). This will activate leak-stop plug and minimize leakage from the sizer.



Fig. N

14. Close and push in the plug while **SQUEEZING** the sizer (Fig O). Wipe off excess water with towel.

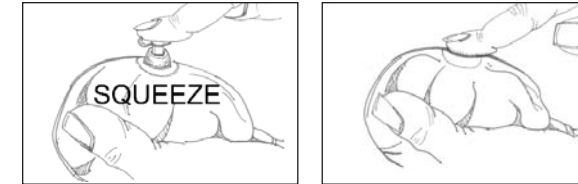


Fig. O

15. Wear the **B4Bra™** and place the filled sizer into receiving pocket of the bra with the port facing forward (Fig P).

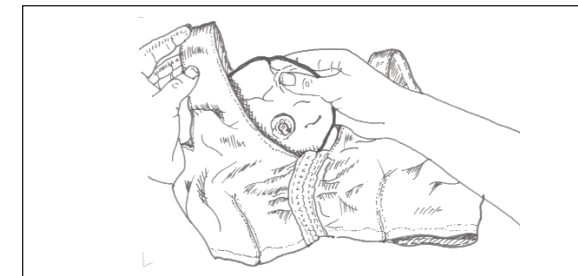


Fig. P

16. Repeat steps # 3-14 for opposite breast sizer.

17. Sizers may be removed and the size adjusted using steps # 5-14.

18. Use enclosed Tables 1 & 2 to help identify the sizers and corresponding implants that achieve your goals. Sizers may be filled according to achieve moderate (Table 1) or high profile (Table 2) dimensions.

IMPORTANT INFORMATION:

If implants are to be placed in the sub pectoral (**UNDER THE MUSCLE**) add an additional 10% to the size estimate. Otherwise if implants are to be placed in the sub glandular (**OVER THE MUSCLE**) position, your determined size estimate may be used. For example if you like **300cc** and desire an "under the muscle" location, you should choose a **330cc** implant (300 + 10% of 300).

1.0 cc (cubic centimeter) = 1.0 ml = 1.0 gm
1 ounce = 28.5 cc or ml (approximately 30 cc)

DISCLAIMERS:

1. **Caution:** leakage of fluid from sizers may cause damage to vulnerable garments, materials or surfaces.
2. **Caution:** product components contain LATEX. Protect skin from exposure if latex sensitive.
3. Not for internal use or implantation
4. For external use only.
5. For **personal single use** only; **DO NOT** share as this may result in transmission of disease.
6. the **B4BRA™** does not guarantee any specific functional or cosmetic result.

ClearPoint Medical Inc.
North America: 866.694.7799
International: 514.631.4555
Fax: 514.631.8885
www.ClearPointMD.com
info@clearpointmd.com

USA - 30 Lawrence Paquette Industrial Drive, Champlain, NY 12919
CANADA - 28 Lindsay Avenue, Dorval, QC H9P 2T8